



AT THE END THE RESULT COUNTS.
AT THE BEGINNING **KNOCHE**.

WORK THE LAND WITH FIELDMAX, HARVEST QUALITY



ROLLERS



ROLLERS



STUCK IN A RUT? GET YOUR SOIL BACK ON THE RIGHT TRACK.

Our FIELDMAX rollers put the final touches to your tilled soil, especially when things start getting muddy.

Whether optimum soil compaction in the germination layer, opening capped crusts, closing cavities to protect against snails and voles, creating a topsoil crumb structure, or rolling down seeds that have been pushed up by ice in spring: The versatile FIELDMAX roller from KNOCHE is an indispensable tool for tillage and maintenance management.

High own weight, special steel shafts with 50 mm diameter, working widths ranging from 2.50 m to 12.20 m, and highly precise and robust ball bearings offer efficient soil preparation. Short elements ensure precise adjustment of the roller to the soil whilst relieving strain on the bearings and shafts. The result is uniformly neat work across the entire working width and consistent recompaction at a working speed of 8 to 12 km/h.

CAMBRIDGE RING Ø 510 MM



Weight per m working width
(without frame): approx. 300 kg

The classic Cambridge ring has been an institution amongst rollers for decades. The ring shape can be used on nearly all cropland as well as pasture. With its special profile, the Knoche Cambridge ring excels by leaving a wave pattern in the soil, thereby minimising the risk of erosion. There are then no smooth furrows left in the soil. The Cambridge ring is mounted with an additional serrated cleaning ring on the shaft. The serrated cleaning ring not only ensures good cleaning effects even on cohesive soils, but also good crumbing properties by breaking up clumps. The Cambridge ring leaves behind a very fine topsoil structure ensuring a very fine crumbed seedbed. In turn, that seedbed ensures good germinating conditions and crop growth.

STAR RING Ø 500 MM



Weight per m working width
(without frame): approx. 280 kg

The star ring has become increasingly popular of late. It stands out with its serrated profile. The star ring is ideal for seedbed preparation. Its special profile can generate a coarser soil structure. What is more, the ring shape excels by being able to sort clumps within the soil structure. That leaves the seedbed with a fine, sufficiently compacted structure at the bottom and coarse layering in the topsoil. That effect offers essential advantages when soils heat up, in gas exchange, and above all in their ability to absorb precipitation. Capping after heavy rainfall can be effectively counteracted. The star rings are also ideal tools for breaking up those kinds of soil crusts after the winter.

CROSSKILL RING Ø 500 MM



Weight per m working width
(without frame): approx. 150 kg

The crosskill ring is the special ring for particular requirements. Whether growing vegetables in heavy river catchment soils, sugar beets in clay soils, or as an alternative solution for good crumbing properties. The ring with the "cutting" cams has the advantage of not penetrating so deeply when compacting soil. On the one hand, that reduces the risk of capping, and on the other hand increases the soil's water retention. The ring achieves much better shredding results than other rings. And this effect increases with greater speeds.

ROLLER

FIELDMAX 2.5-3.0 M

KNOCHE builds rollers up to 3 m for three-point hydraulics either as a combined front/rear mounting variation with steering block, or as a purely rear configuration.



- GGG 40 grey cast ductile iron roller rings
- CroMo S4 50 mm axle shaft
- S355 MH fine grain steel frame
- Rigid configuration
- 3 different roller profiles



ROLLERS

TECHNICAL DATA

	250	300
Working width	250 cm	300 cm
Transport width	250 cm	300 cm
Attachment type	Rear and front	Rear and front
Attachment type	CAT II	CAT II
Power requirement from	35 BHP	40 BHP
Approx. weight	875 kg	985 kg
Folding		

ROLLER RINGS



510 mm Cambridge ring

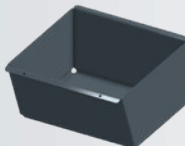


500 mm star ring



500 mm crosskill ring

ACCESSORIES



Stone collector



Lighting



45x10 crossboard



80x10 crossboard



Levelling bar

ROLLERS

FIELDMAX 4.5–9.2 M

KNOCHE FIELDMAX rollers are truly versatile all-rounders, whether opening capped crusts, compacting soil and closing cavities, rolling down seeds that have been pushed up by ice, creating a finely crumbed soil structure, or airing pastures.



- GGG 40 grey cast ductile iron roller rings
- CroMo S4 50 mm axle shaft
- S355 MH fine grain steel frame
- Single and double articulation
- 3 different roller profiles



ROLLERS

TECHNICAL DATA

	450	530	620	780	820	920
Working width	450 cm	530 cm	620 cm	780 cm	820 cm	920 cm
Transport width	240 cm	240 cm	275 cm	260 cm	260 cm	260 cm
Articulation	single/double	single/double	single/double	double	double	doppel
Tyres	10,0 / 75-15 11,5 / 80-15	10,0 / 75-15 11,5 / 80-15	10,0 / 75-15 11,5 / 80-15	11,5 / 80-15 15 / 55-17	11,5 / 80-15 15 / 55-17	11,5 / 80-15 15 / 55-17
Power requirement from	45 BHP	50 BHP	75 BHP	100 BHP	115 BHP	135 BHP
Approx. weight	2,045 kg	2,720 kg	2,990 kg	3,895 kg	4,060 kg	4,450 kg
Folding						

ROLLER RINGS



510 mm Cambridge ring



500 mm star ring



500 mm crosskill ring

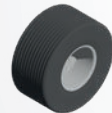
TYRES



10.0 / 75-15



11.5 / 80-15



15 / 55-17

ACCESSORIES



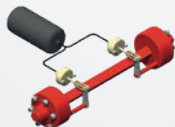
Individual operating permit documents



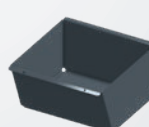
TÜV authorisation documents



Lighting



Compressed air brake



Stone collector



Eyelet



Spherical head



45x10 crossboard



80x10 crossboard

ROLLER

FIELDMAX 10.2-12.2 M

The FIELDMAX with working widths of 10.2 and 12.2 metres comes with central and double articulation as standard.



- GGG 40 grey cast ductile iron roller rings
- CroMo S4 50 mm axle shaft
- S355 MH fine grain steel frame
- Double articulation
- 3 different roller profiles



ROLLERS

TECHNICAL DATA

	1020	1220
Working width	1020 cm	1220 cm
Transport width	280 cm	280 cm
Articulation	double	double
Tyres	19 / 45-17	19 / 45-17
Power requirement from	155 BHP	175 BHP
Approx. weight	5,540 kg	6,820 kg
Folding		

ROLLER RINGS



510 mm Cambridge ring

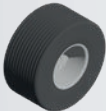


500 mm star ring

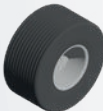


500 mm crosskill ring

TYRES



19 / 45-17



500 / 55-20

ACCESSORIES



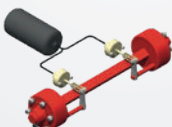
Individual operating permit documents



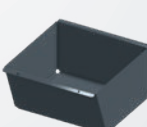
TÜV authorisation documents



Lighting



Compressed air brake



Stone collector



Eyelet



Spherical head



45x10 crossboard



80x10 crossboard

TECHNICAL DETAILS AND SPECIAL FEATURES

In-depth solutions that make your land fertile: KNOCHE FIELDMAX rollers combine flexible use options with high-grade material quality.



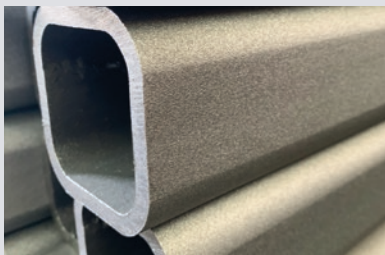
50 mm diameter Cromo S4 steel shaft



GGG40 grey cast ductile iron



Frame manufacturing with DIN EN ISO 9606-1 certified welding



S355M fine grain steel frame



Double articulation



Hydraulic connections



Screw box for operating manual



Crossboard



Stone collector made from 2 mm steel

FURTHER INFORMATION



TÜV authorisation documents for operating permit



Total weight > 3t: Operating permit as per StVO (Road Traffic Act) required



Axle load > 3t: Brake as per StVO (Road Traffic Act) required



Powerful working widths



Up to 12m working width



Available with single or double articulation



Pasture maintenance



Promote tillering



Open crusts



Seedbed rolling



Space-saving transport width



KNOCHE MASCHINENBAU GMBH

Rotrehre 23

D-31542 Bad Nenndorf

Tel.: +49 57 23/94 76 70

Fax: +49 57 23/94 76 86

provided by:

Technical data and images approximate and non-binding. Subject to change.